



NO WATER FROM TAP :

- child lock

and/or

- tap lever

has broken & needs to be replaced

CAUSES:

1. Normal wear & tear
 2. Constant flicking back of taps when releasing
-

**TURN POWER OFF
& UNPLUG BEFORE
STARTING !**



**Lift bowl from base,
have a bucket ready to put it into.**



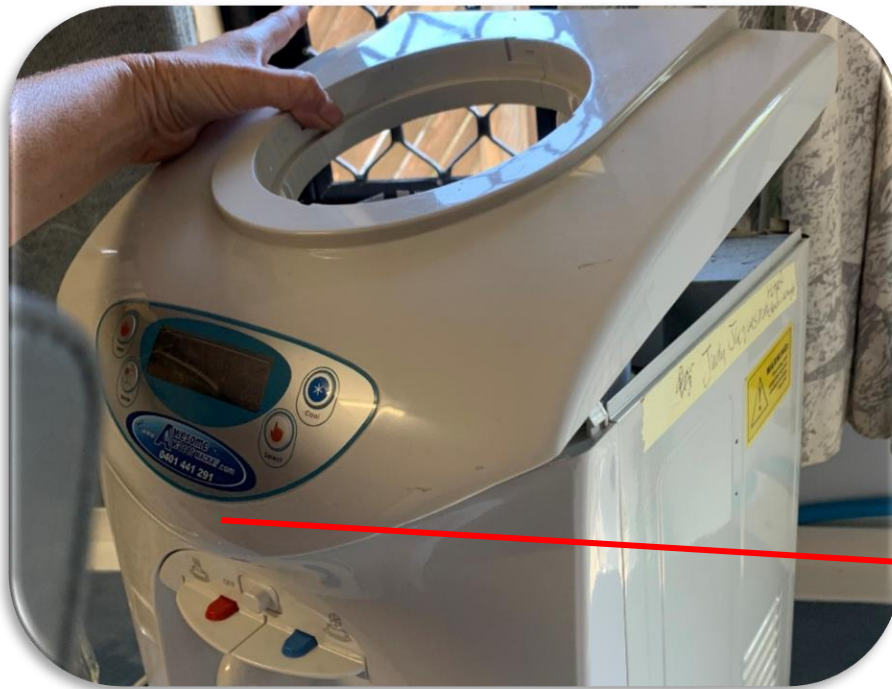
Drain as much water from the tank as you can by running both taps, there would still be quite a bit left if the cold tap has completely broken off – this will be drained later



Unscrew 2 x top screws at back of the cooler



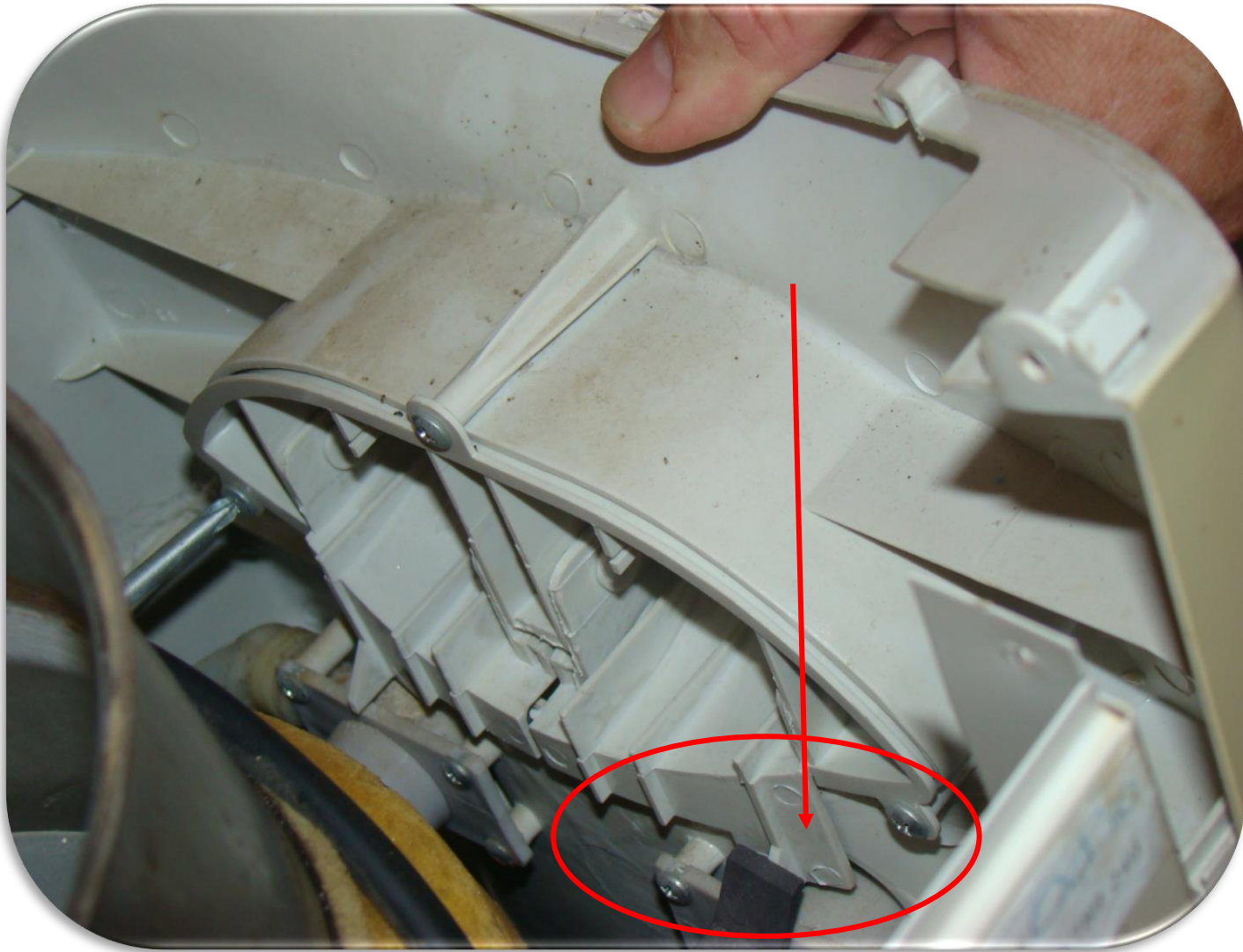
Lift top cover from the back as indicated here



Gently wiggle to loosen the clip at the front so top cover can be removed.

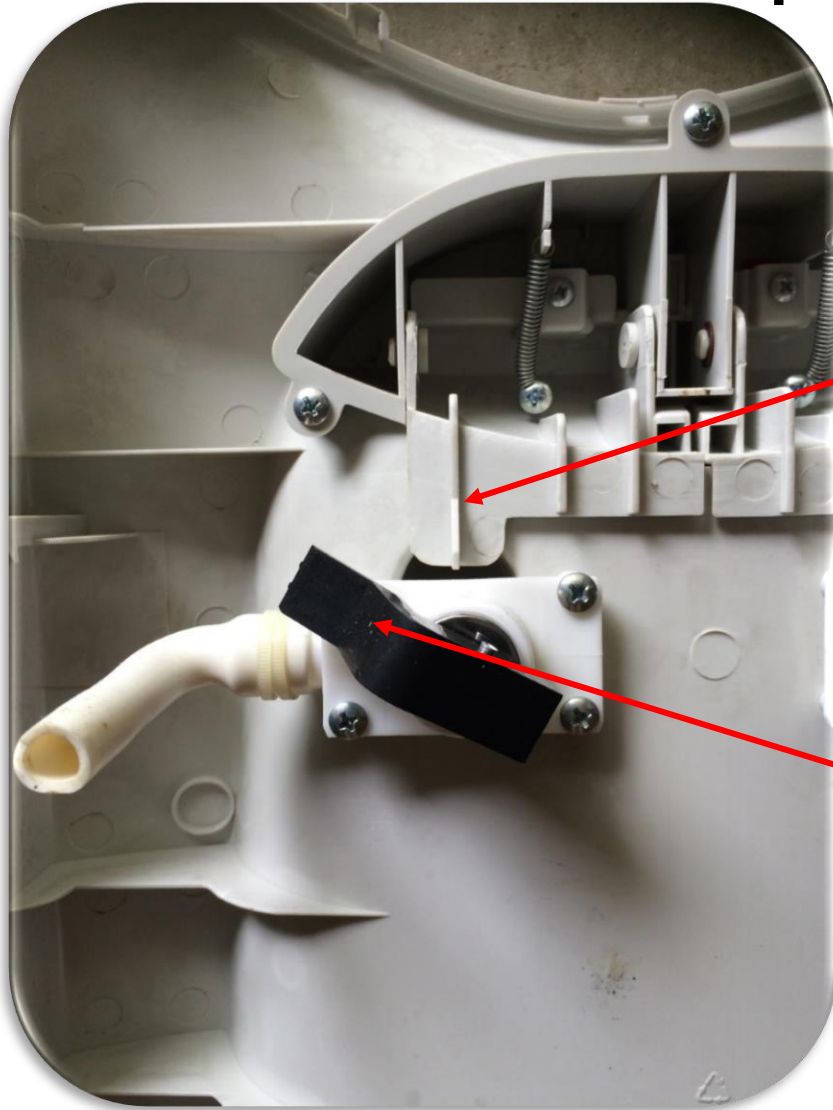


Remove top cover, hanging it on the side while ensuring that wires stays in tact



Using a torch, look down the front of the cooler, while pushing down on the tap that is broken, to see if you can determine which part is broken

It could be one of two parts, or both parts that needs replacement



**Child lock
is broken**




**Tap lever
is broken**



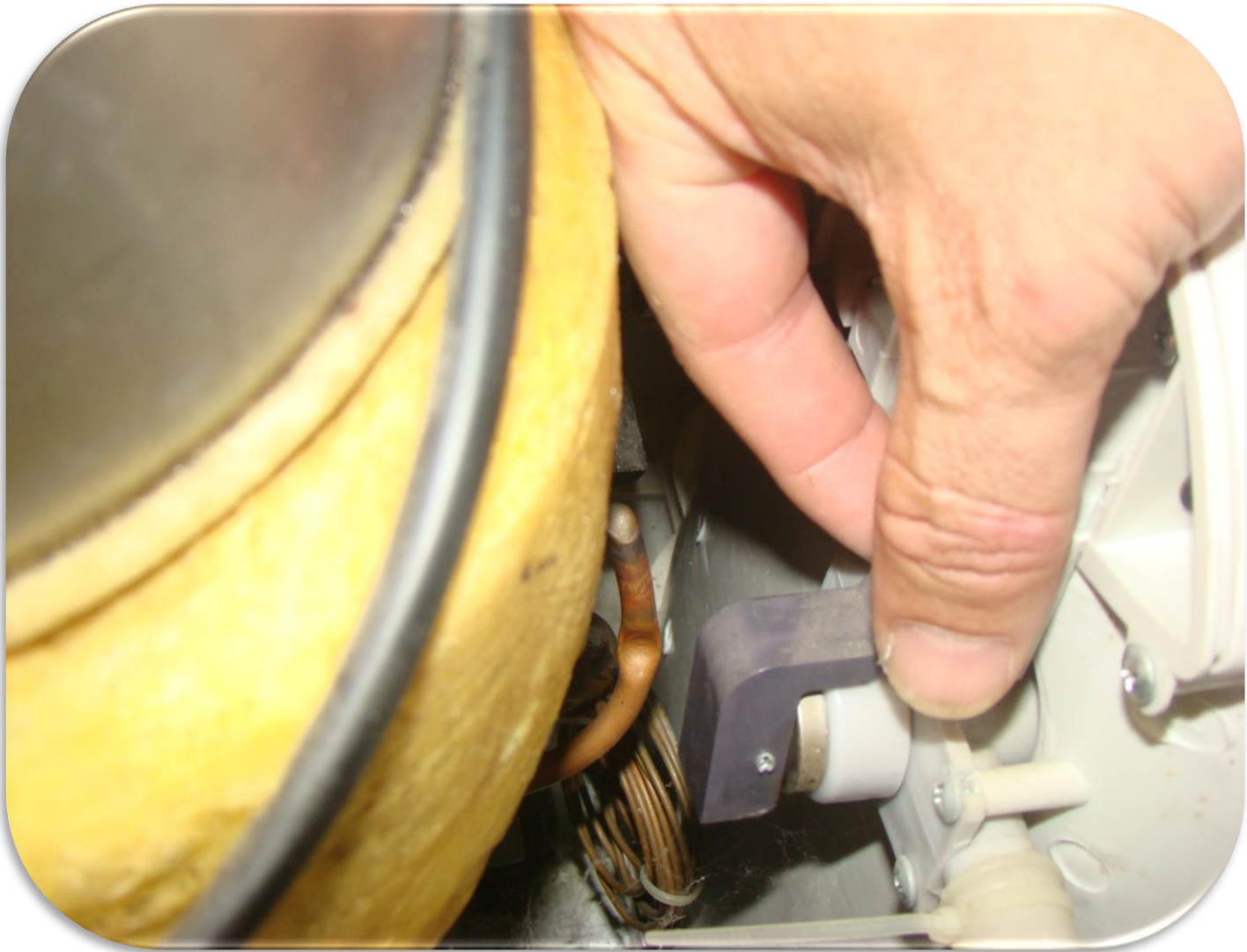
In most cases though, you will need to remove the front cover completely to determine which part(s) needs replacement

REMOVING THE FRONT COVER

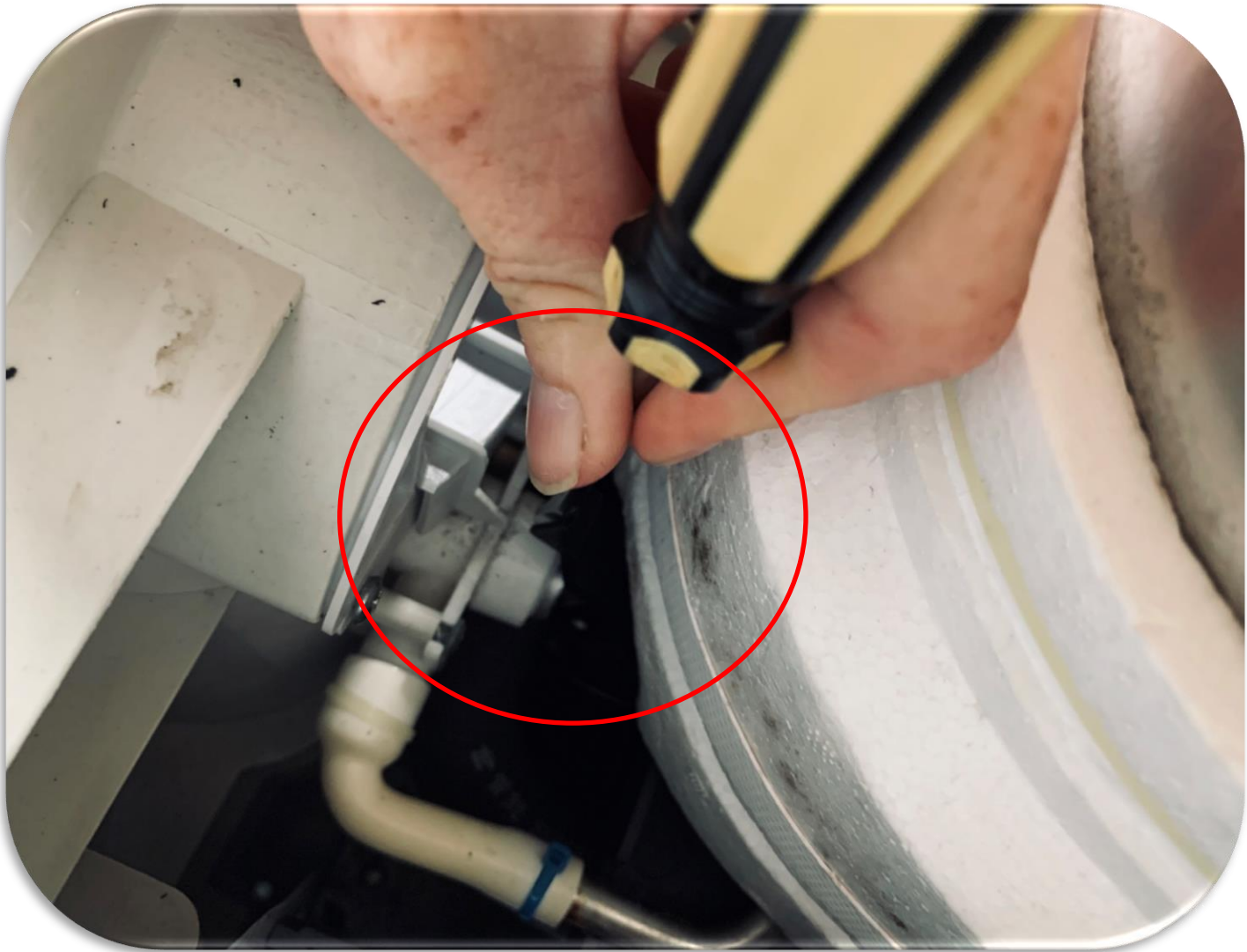


**FIRST, ALL
REMAINING
WATER IN
THE TANK
WILL NEED
TO BE
DRAINED**





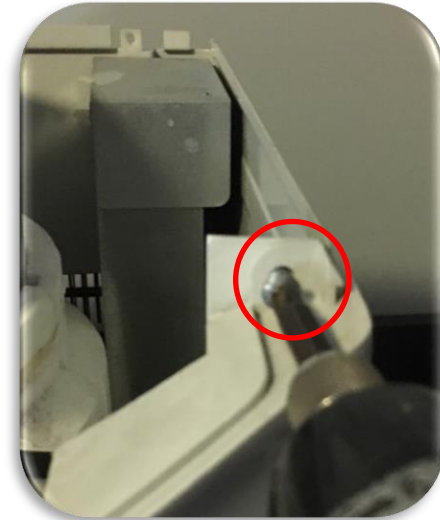
**Push back the cold tap lever, to allow
water in tank to drain**



If the cold tap lever is broken, you would need a screw driver to wedge open the tap lever on the inside to allow the water to drain



**Remember to have a cup or container
under the tap ready to catch the water being drained**



Remove 2 x screws at the top front



Remove drip tray



Unscrew 2 x screws located behind drip tray.



Cut off zip ties that secures silicone pipes to steel pipes



Push / pull silicone pipes off the steel pipe

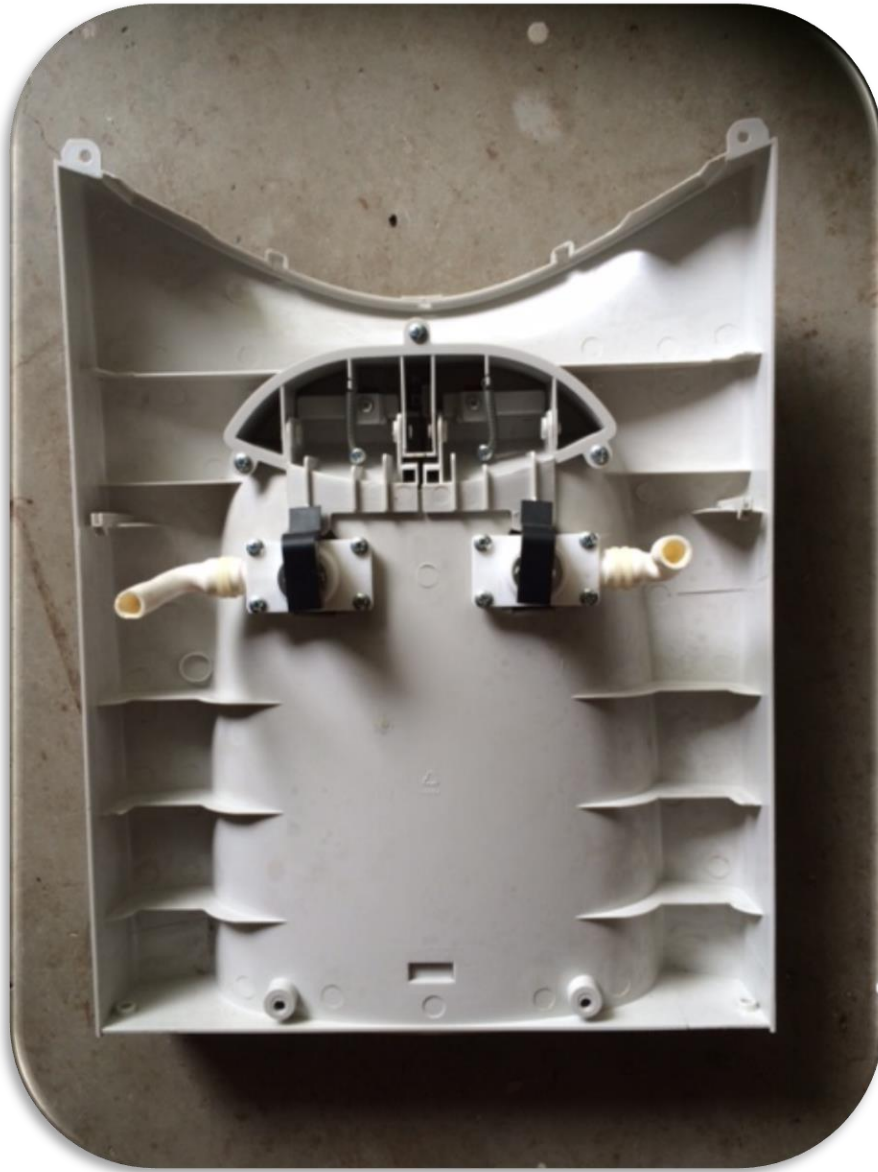
This could be hard to remove and might need to use fingers to force off pipe from the pipe section.



**Unclip both hooks that holds the front cover
onto the sides of cooler**



Front face can now be removed.



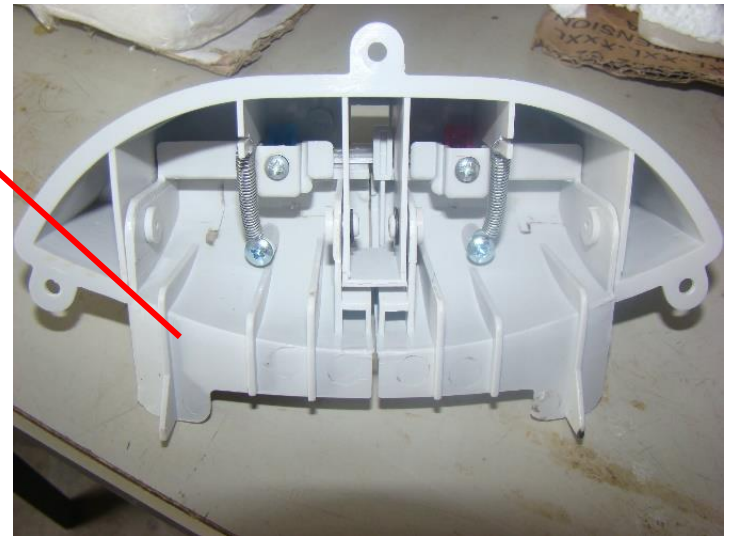
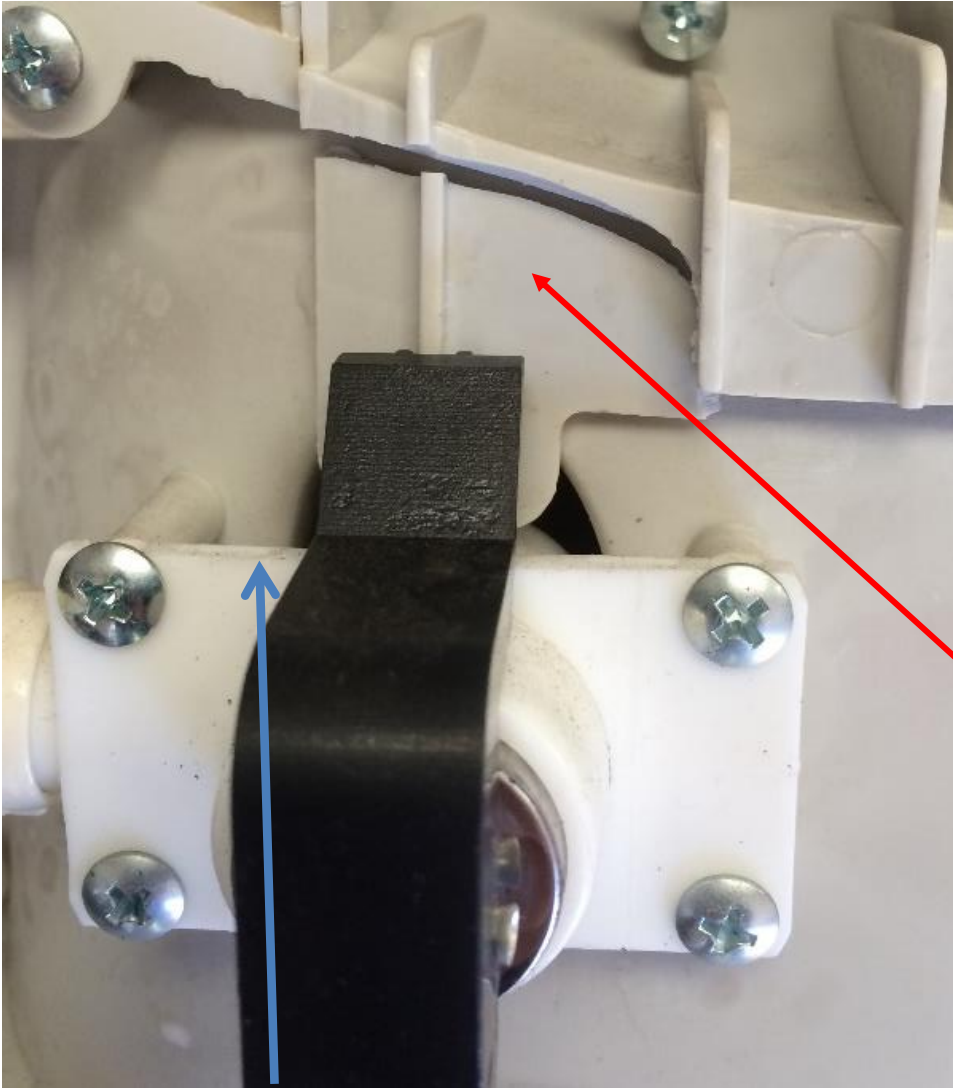
Remove front face cover and place face down to inspect parts that needs to be replaced

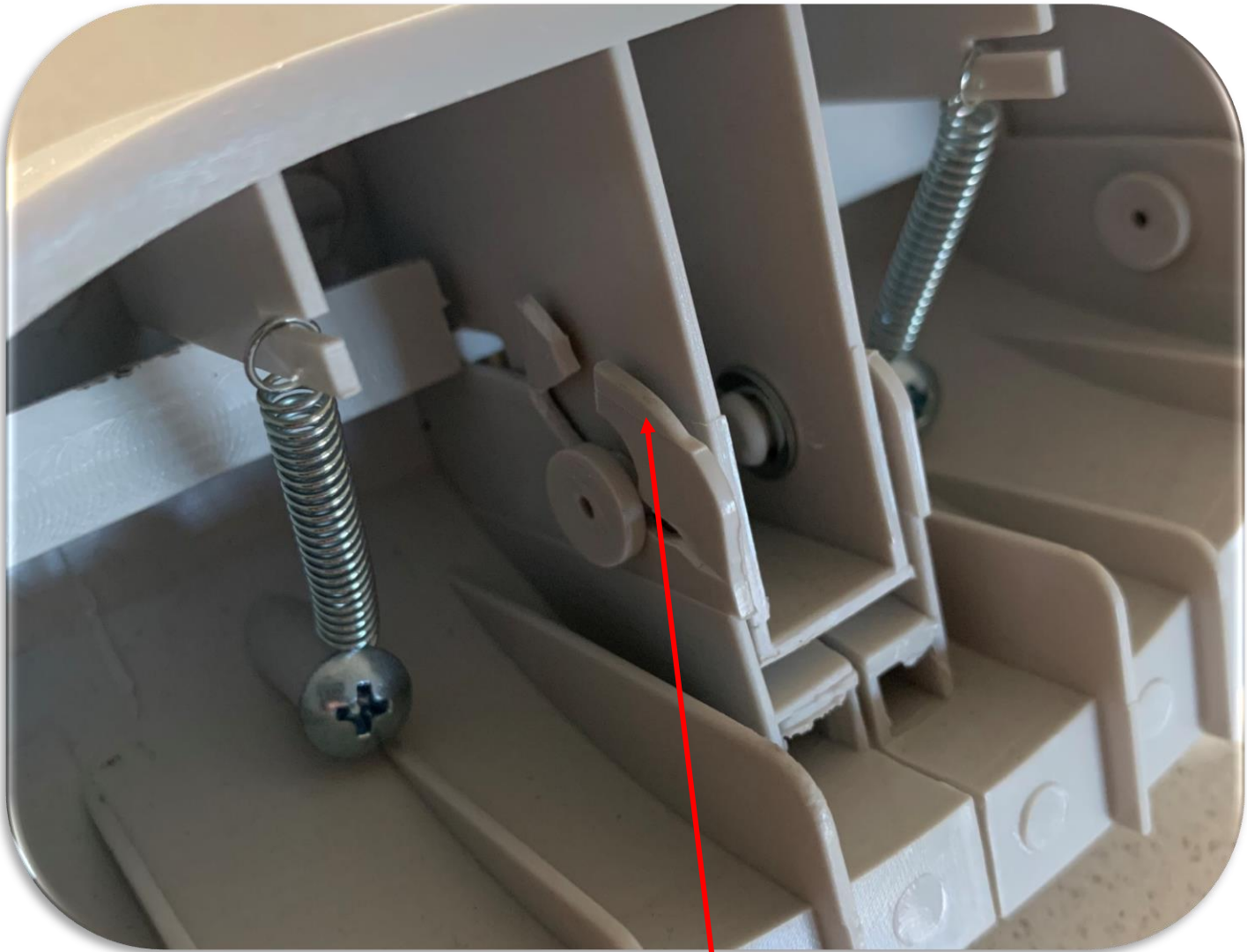
IT COULD BE ONE OF TWO PARTS THAT NEEDS REPLACEMENT

IN SOME CASES BOTH PARTS NEED TO BE
REPALCED

Item 1

Child lock is broken, or starting to crack





In some cases the this part breaks

Item 1 = Child lock –

specify if you require
standard child lock **1a** or child lock plus **1b**

No safety tabs



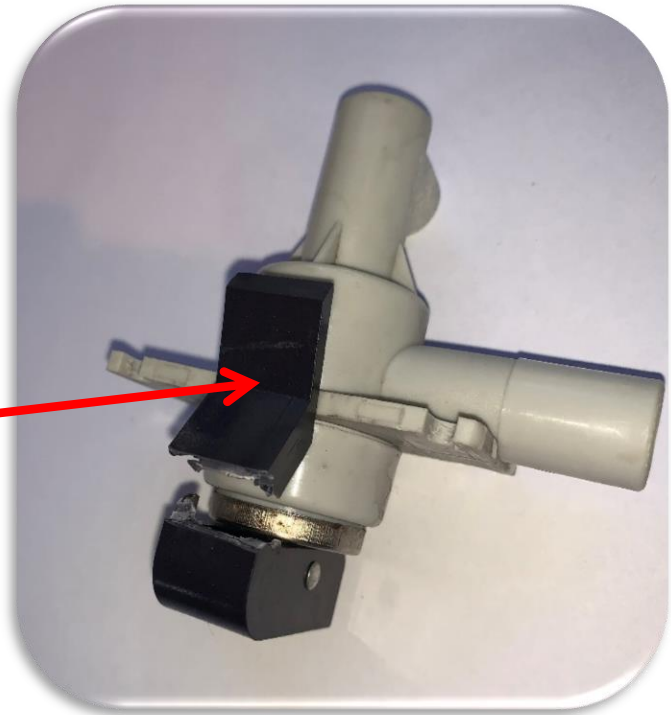
With safety tabs



Interchangeable – can use either, depending if you need / want the extra child lock safety feature.

The tap lever is broken

Item 2





Specify if hot or cold is required.

VERY IMPORTANT

Item 1 Child lock

Item 2
Tap lever

Most often it is the **child lock** that breaks, but the cause of this is usually due to the spring in the **tap lever** that has worn out.

Check both parts – if the tap lever is really hard to open & close you will need to replace both parts to prevent the child lock from break again a few months down the track

Proceed to website to order parts

<https://www.awesomewatermackay.com/parts-only>

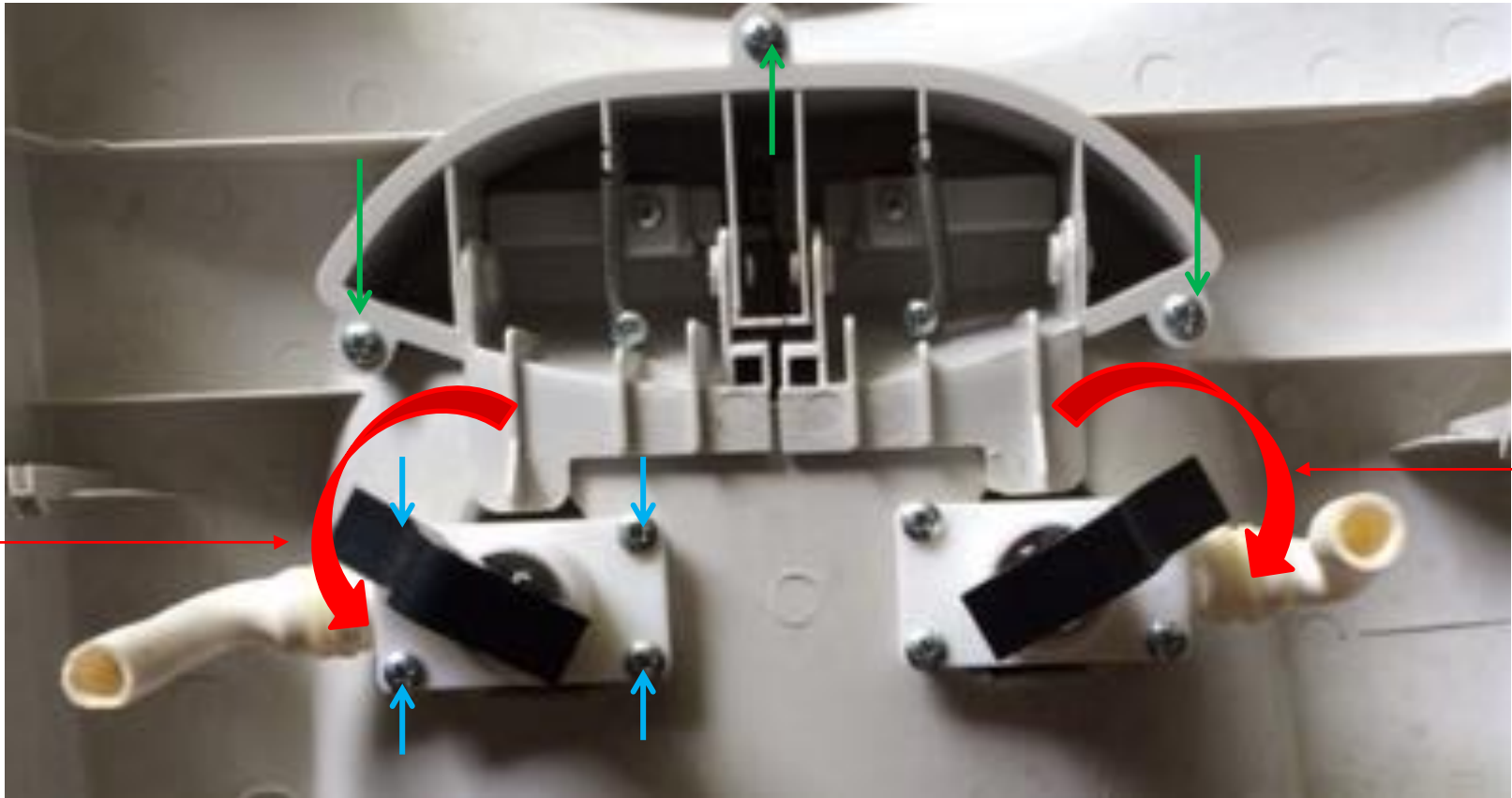


Payment can be made online with PayPal or Credit card
Or select offline payment for our bank details to be provided

REPLACING PARTS

Un-hook tap levers from child lock hook on both sides

If child lock is broken unscrew 3 x screws to remove child lock

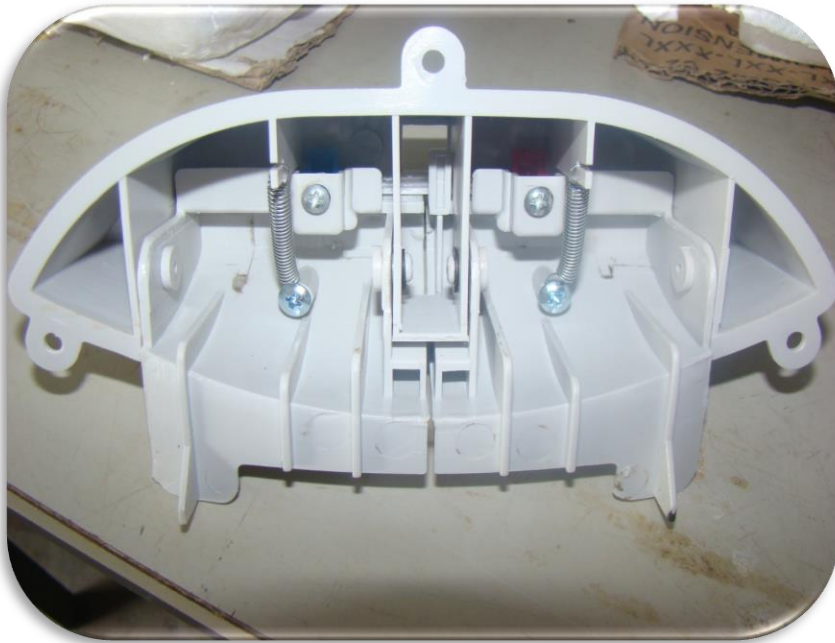


If tap lever is broken – unscrew 4x screws to remove tap to be replaced

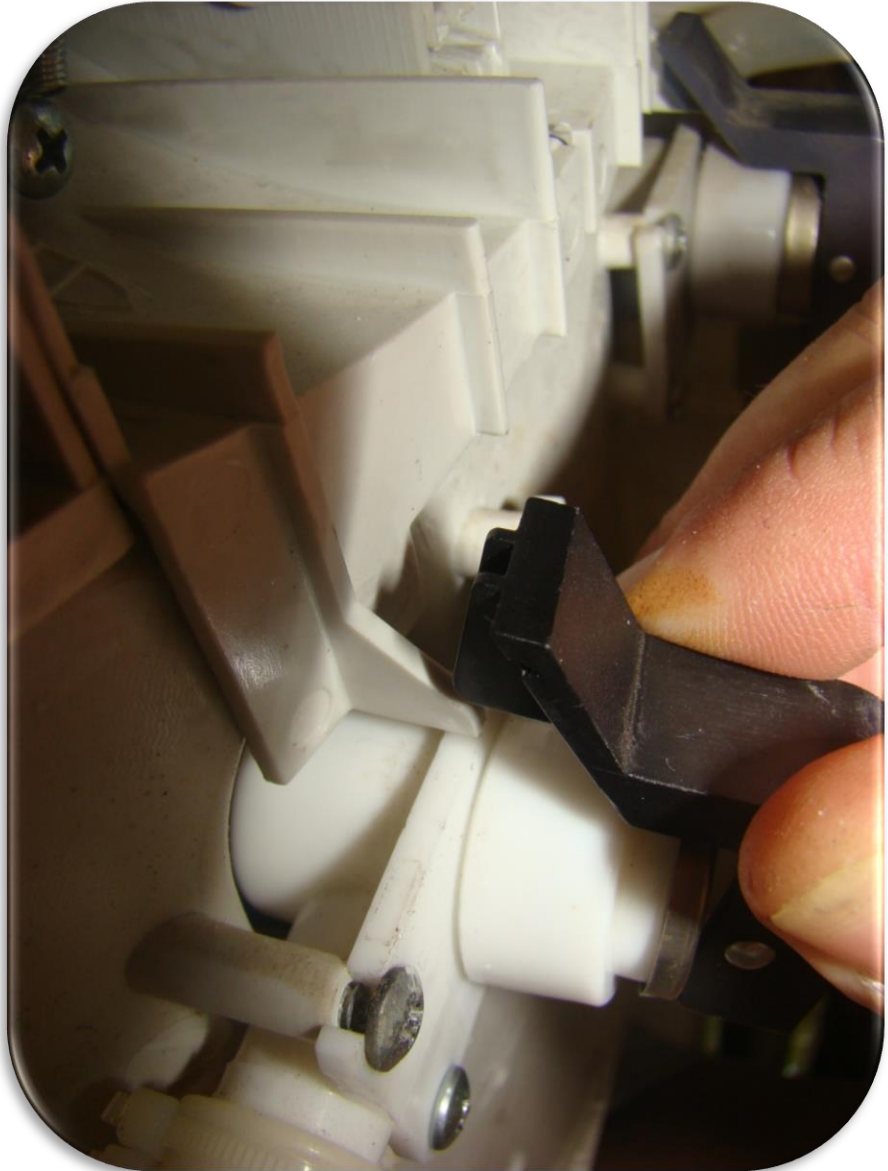
Remove broken parts &

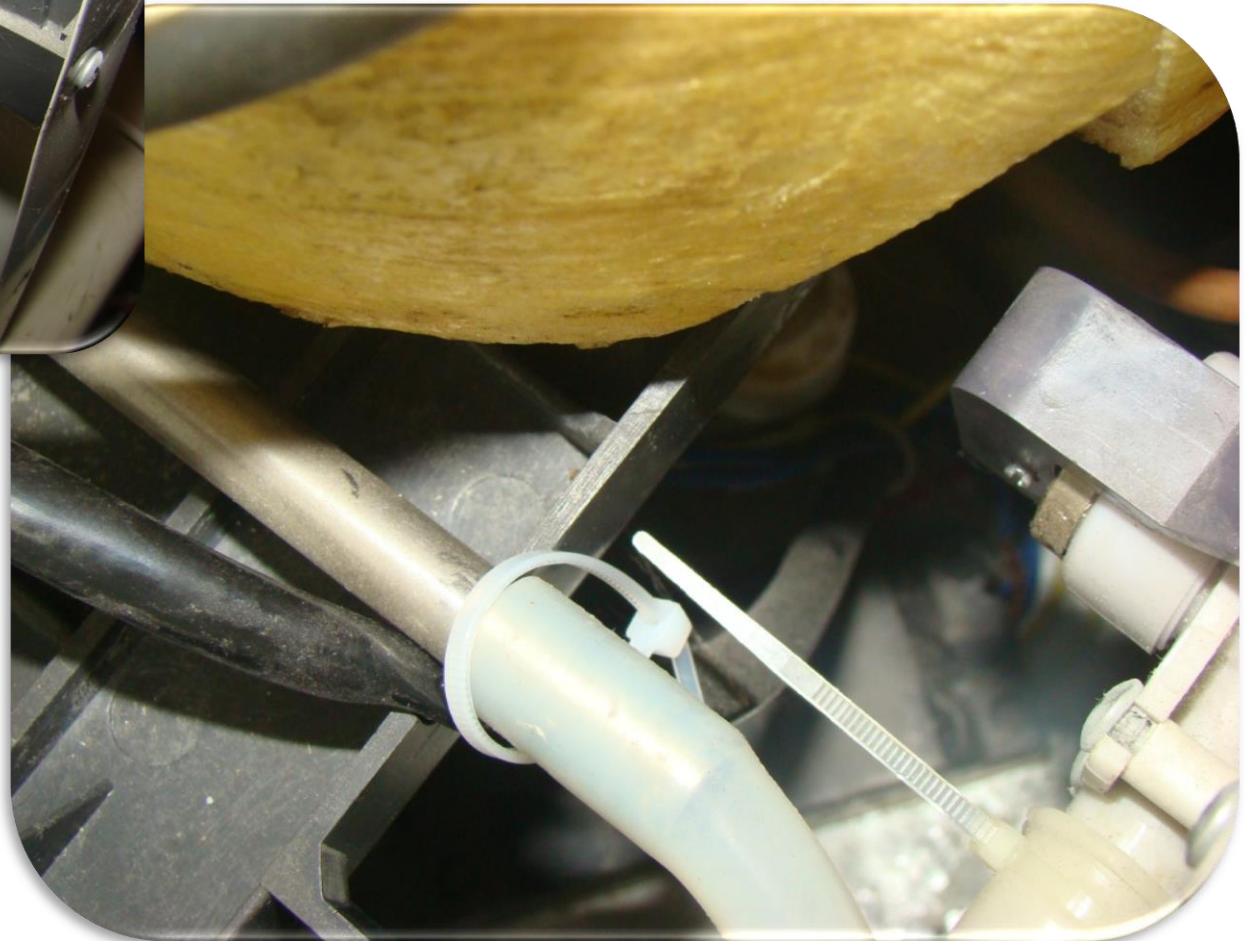
Replace relevant parts with new parts

Replace screws as per previous slide



Place tap
levers
back onto
child lock
hook.





Replace silicone pipe onto metal pipe (this can be tricky, need to twist and turn the pipe to get it on far enough. Secure with zip-tie once in place

Close up in reverse order :

- 1st screws behind drip tray
- 2nd screws at front top
- 3rd screws at back top





Re-assemble, return bottle & filter and fill up.

Ensure you have a steady flow of water from the hot side before turning power back on