



## Symptoms:

- 1.No water from cold tap due to water freezing up in tank**
- 2.Cold Temperature reads very high but water is still cold**

**- cold reader needs replacing -**

**If tank is frozen over turn off & leave to defrost. You can pour boiling water into tank to speed up defrosting process.**

**Be aware that the thermostat might also be frozen in it's casing. If you try to force it out before defrosted it might break off – big problem !**

**Best is to leave overnight to defrost naturally to ensure it is completely defrosted.**



**For older models (prior to ± 2009) the thermostat / cold reader is located in the bottom of the tank.**

**This can be a very tricky job, so if you're not a confident handyman, we wouldn't recommend a DIY job .**



**For newer models (after ± 2009) the thermostat / cold reader is located in the side of the tank.**

**This is a pretty easy DIY job.**

**You will also need  
Silicone Heat Transfer Compound  
Available from JayCar, Dick Smith**



**TURN POWER OFF &  
UNPLUG BEFORE  
STARTING !**



**Lift bowl from base, have a bucket ready to put it into.**



**Drain all water by running both taps.**



**Pull out plastic plate in tank**



**If you have an ice block in the tank leave until completely defrosted, or pour boiling water in to defrost.**



**Bottom cold reader ?**



**Side cold reader ?**



**Unscrew 2 x top screws at back – loosening the lid**



**Gently wiggle the lid loose**



**Remove lid ensuring that wires stay in tact**

**For Side cold readers : Go to Page 19**



**Only applicable if Bottom cold reader  
Remove 2 x screws at the front once lid has been removed.**



**Only applicable if Bottom cold reader  
Remove drip tray & unscrew 2 x screws behind.**



**Only applicable if Bottom cold reader**

**Cut off tie-back securing plastic pipes to metal pipes**



**Only applicable if Bottom cold reader**

**Push / pull pipes leading from the steel pipe to the tap**

This could be hard to remove and might need to use fingers to force off pipe from the pipe section.

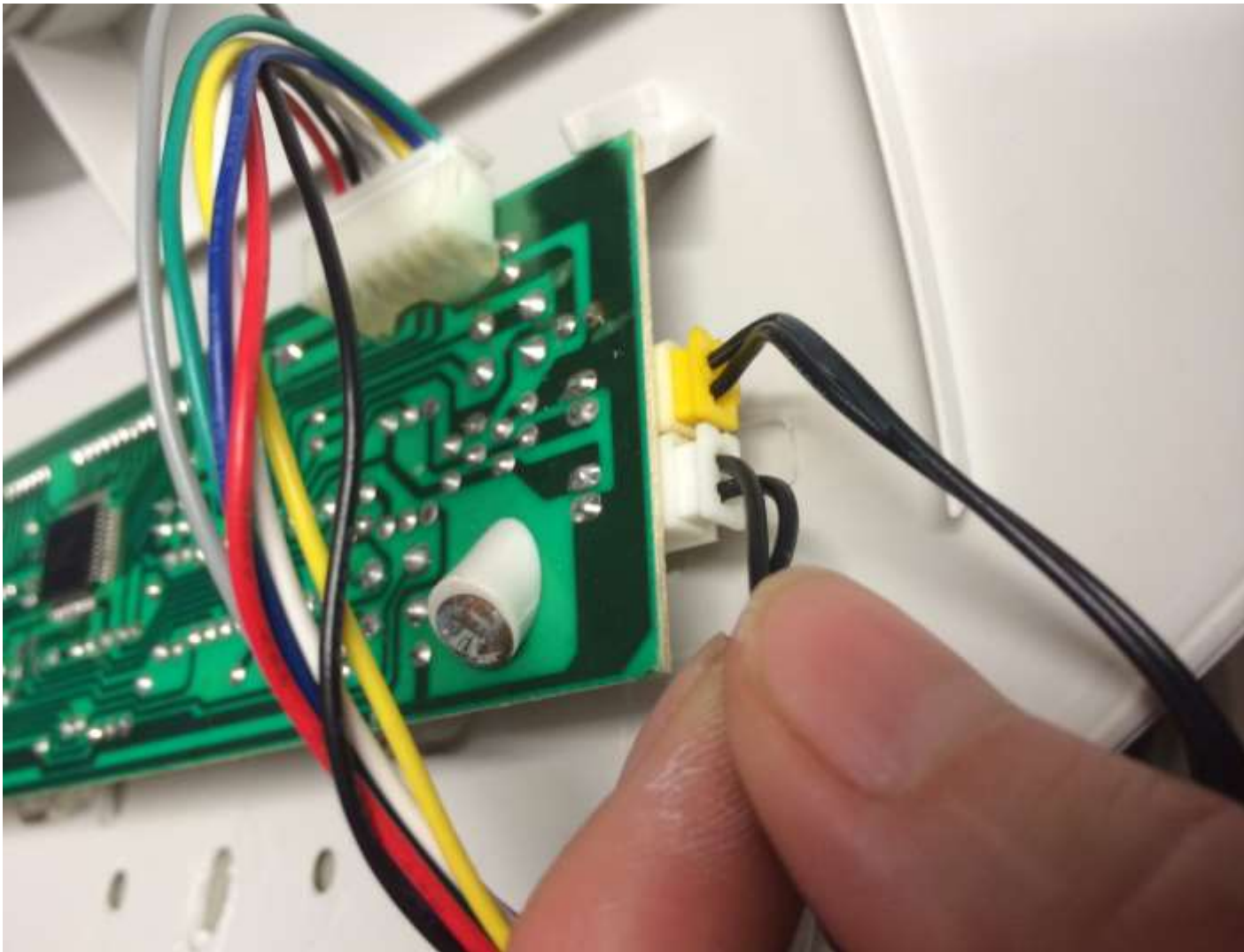




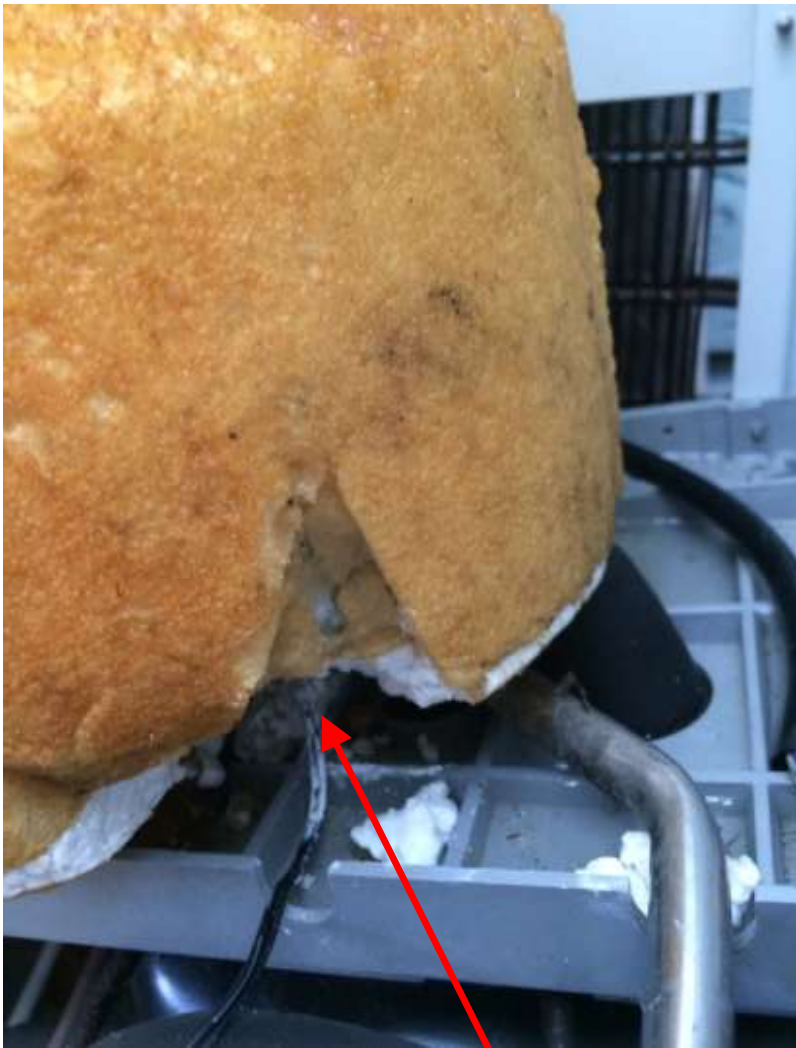
**Only applicable if Bottom cold reader  
Unclip both hooks on the sides.**



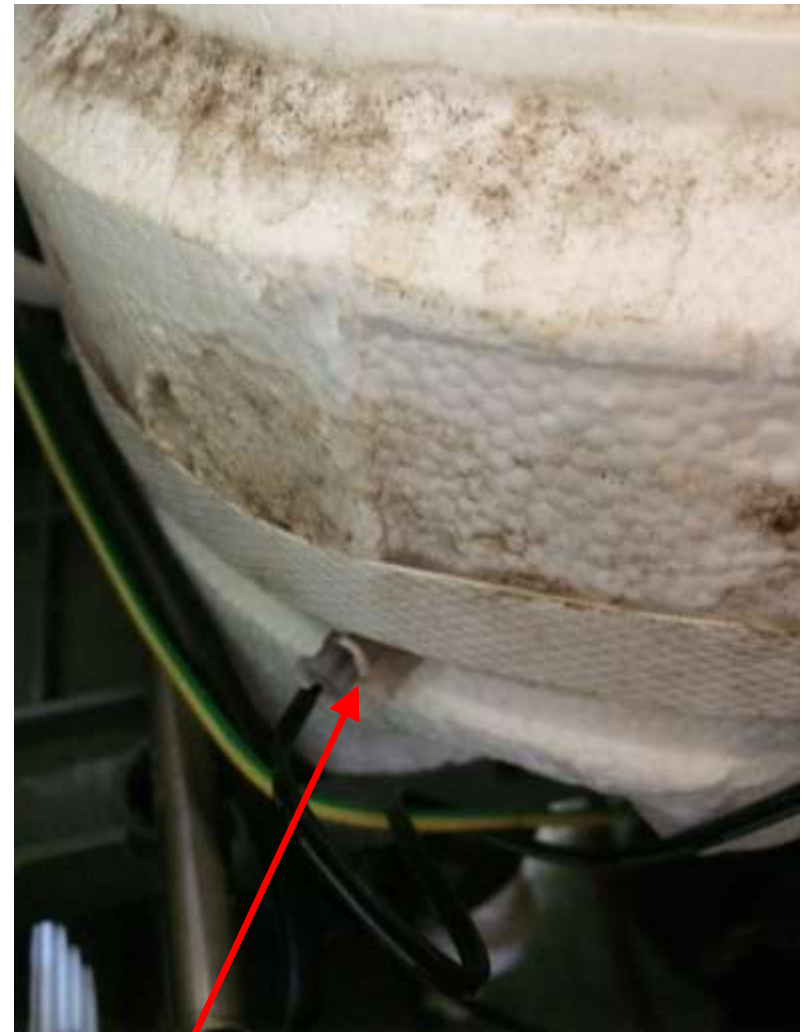
**Only applicable if Bottom cold reader  
Remove front face of machine.**



**To find the location of the cold reader, follow the wire from the white connection on the digi-board (on back of the lid) to the foam around the tank**



**Older models are located at the bottom at the tank, very hard to get to !**



**Newer models are located at the side of the tank, much easier to replace**

## **Bottom cold reader:**



**You will have to cut a wedge in the foam to get to the cold reader.**

**Push the tank backwards to allow space to pull out the cold reader. Pull firmly but without force to prevent from breaking off.**



**Cover the new cold reader's metal bullet with Silicone heat transfer compound**

## **Bottom cold reader:**

**Push metal bullet back into casing.**

**Replace foam wedge that was cut out– silicon or ‘gap filling foam’ is handy for holding in place**

**continue to page 24 of instructions**



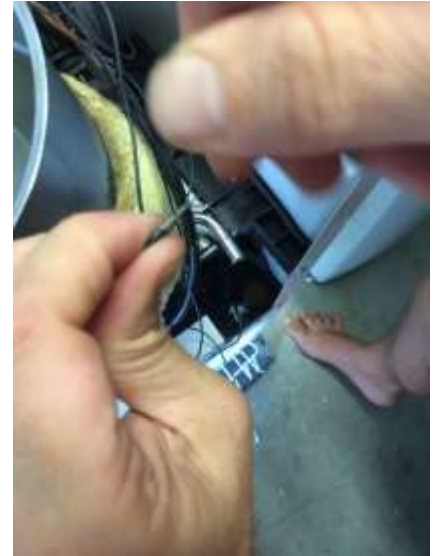
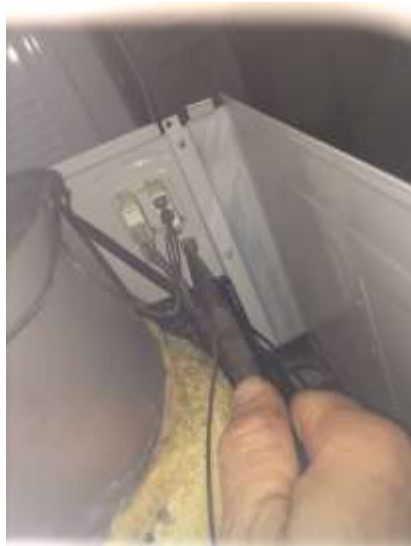


**For older Floor Standing models with Green & Yellow Switch at the back, you will have to fuse the wires to connect the fridge**



**Newer Floor Standing models with only 1 x yellow switch – not applicable**





**Fusing the Fridge wires for older Floor Standing models 25**

## Side cold reader:



**Pull firmly but without force to get cold reader out of casing**



**Replace plastic casing on wire  
and insert back into the  
casing.**

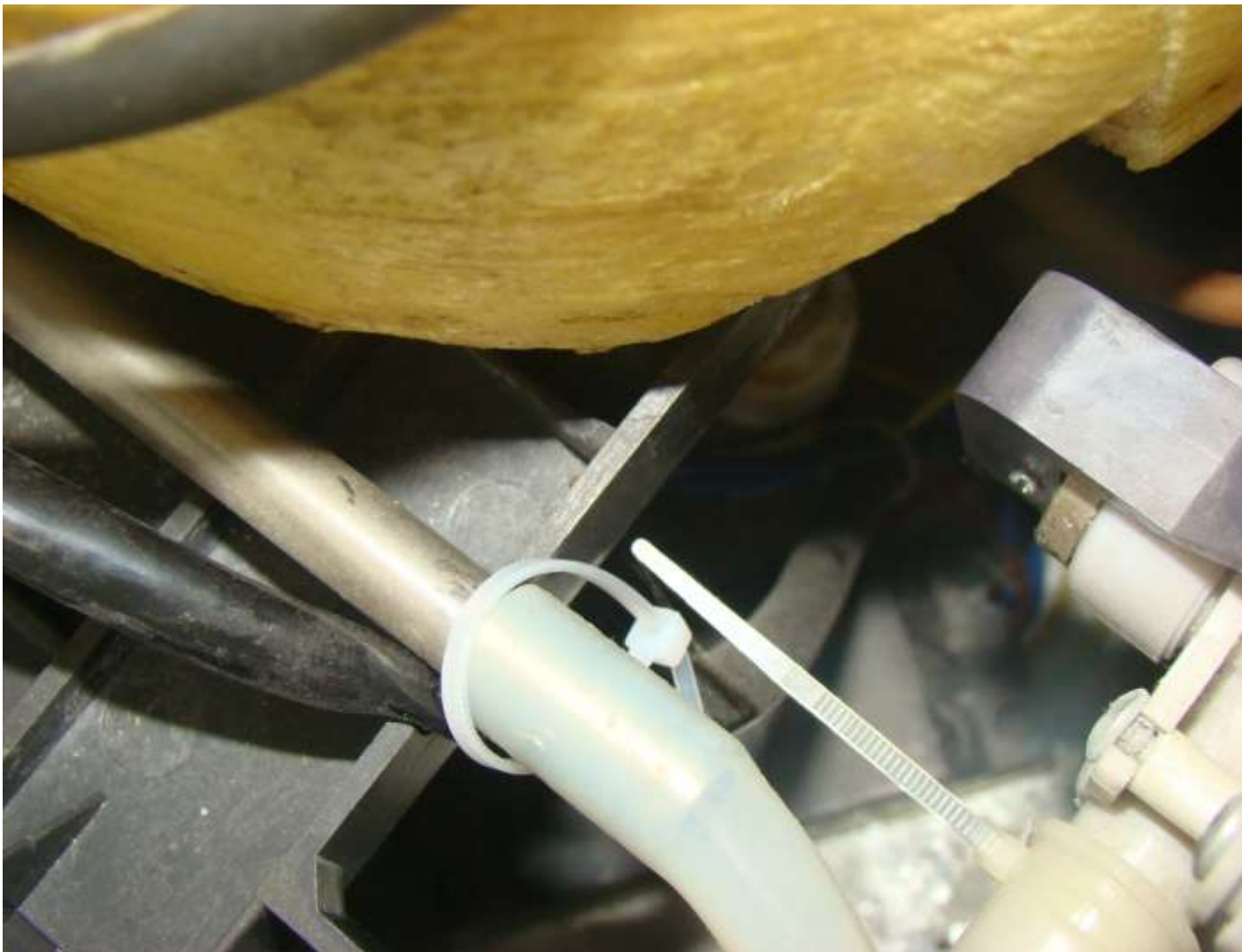
**There is a slight kinck in the  
casing, so just gently push and  
twist until it goes slips in.**



**Plug the white pin  
at the other end  
of the wire back  
into the digi-board**



**Only applicable if Bottom cold reader  
Place a tie-back on the metal pipe section**



**Only applicable if Bottom cold reader**  
**Slip back rubber pipe onto metal pipe (this can be tricky, need to twist and turn the pipe the get it on far enough. Tighten the tie-back once in place**

**CHECK ALL  
OPERATIONS  
BEFORE CLOSING UP**

# Close up

Screw back in reverse order :

-1<sup>st</sup>

-screws behind drip tray

-2<sup>nd</sup>

-screws at front top

-- 3<sup>rd</sup>

-screws at back top

