

Cleaning bottle set & tank, in between filter changes



These instructions are based on the original hot & cold model.



Lift bowl out of machine base, grabbing it with both hands on the bottom bowl – this is easier to do when the water level in the bottle is low.



Place bottle into a bucket you have sitting next to the water cooler



Empty the water left in the tank of cooler by running both the taps



Pull out plastic base plate by putting fingers through holes and pull it straight up, might to give it a few twists to get it to come out.



**Use clean cloth to soak up last bit of water, and wipe tank clean
Remember to also wipe down sides to remove any bio-film & calcium buildup.**



Wipe clean base plate under running water using a chux.



Return base plate by putting your finger through one hole and using the other hole to look through to find spindle.



Remove Lid, lift top part of the bowl, remove white rim & put both in a secure spot.



Lift bottom part of bowl out of bucket & tip out all water



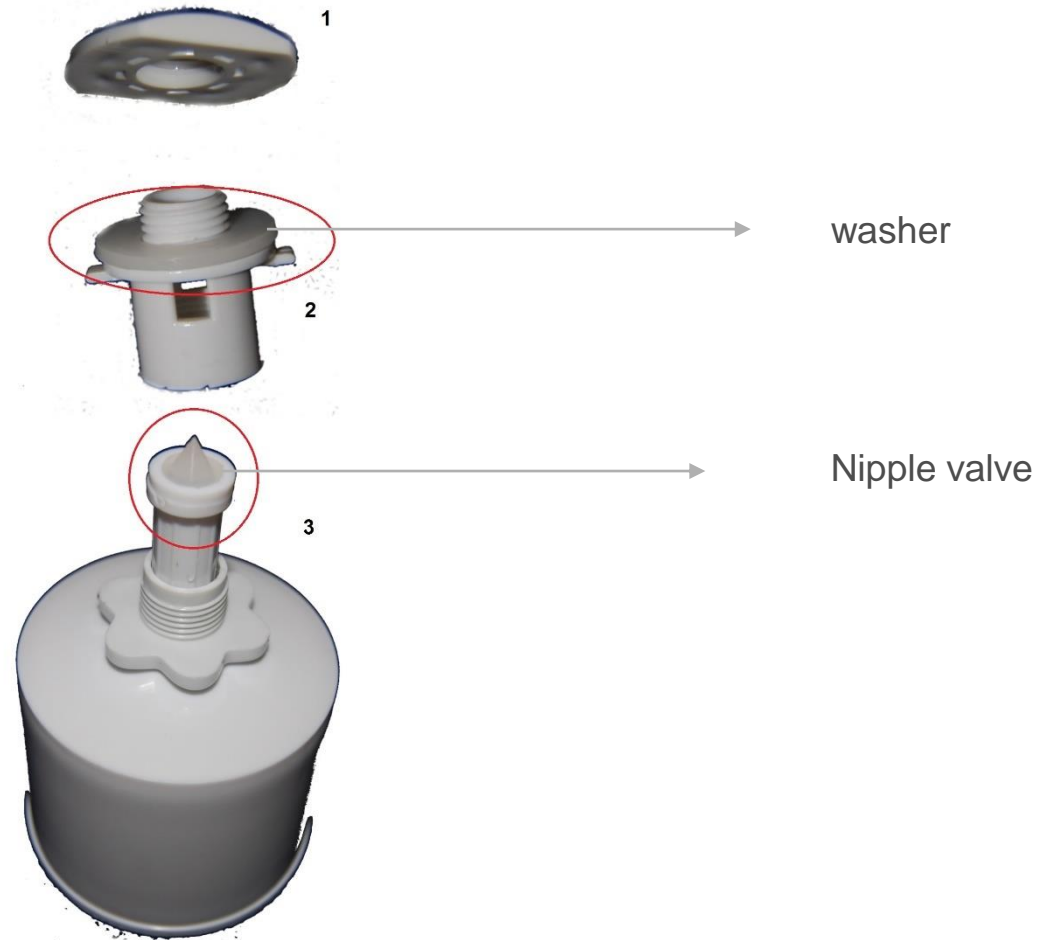
**Use the chux to wipe out the sides & bottom of the bowl
No soap or detergent needed except if very dirty / mouldy.
If you do use soap ensure you rinse out properly to avoid soapy taste.**



Rinse the float valve under running water and clean with a chux. You might need to unscrew it from the bottom bowl if it is very dirty to clean it properly.



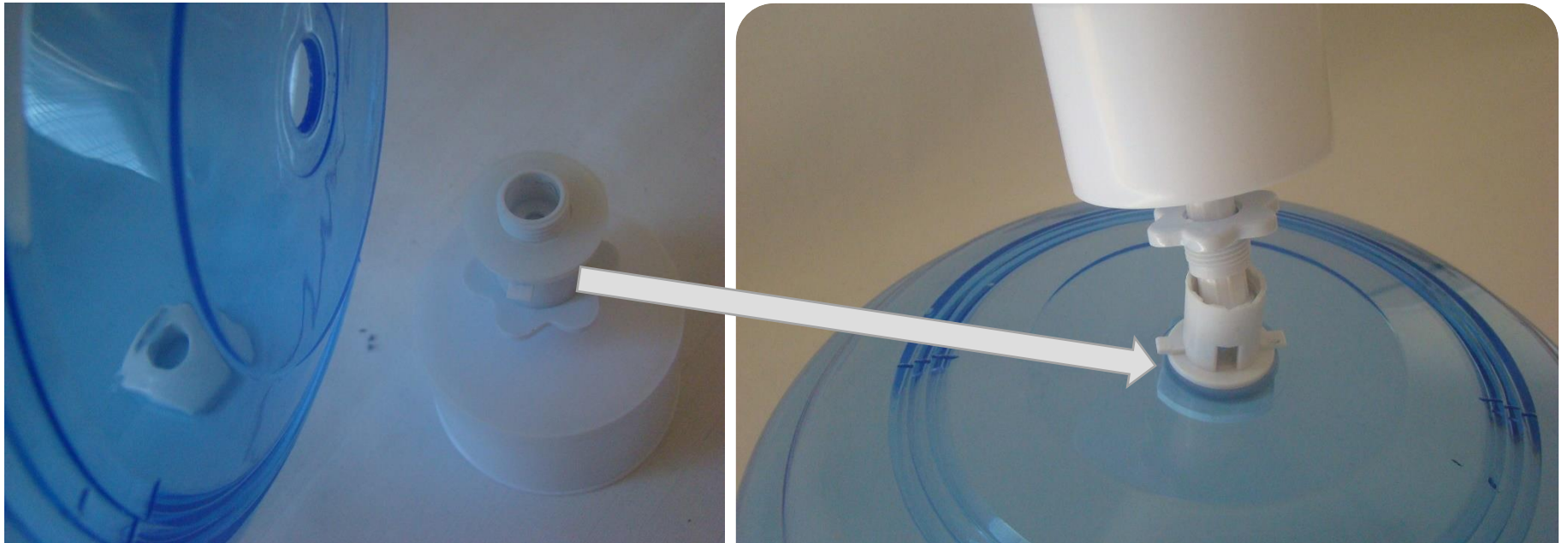
Hold on to the nut on the inside of the bowl and unscrew anti clockwise to undo the bottom part of float valve. You might need to use a tea towel to get a grip



Float valve consist of 3 parts, and two washers



Under running water and with a clean chux, wipe down both parts of the float valve, especially in the tread where it screws together.



Reassemble float valve to bottom bowl making sure the washer is in place, this needs to be tightened securely but do not over tighten



Unscrew the filter from the top bowl – grip filter in middle and twist anti-clock wise, Be careful not to use too much force holding onto the top of the bowl as it might crack. A safer option is to put the bowl upside down on a flat surface and then unscrew the filter.



Unscrew the nut from the bottom bowl to release the dome



Rinse & wipe clean top bowl under running water



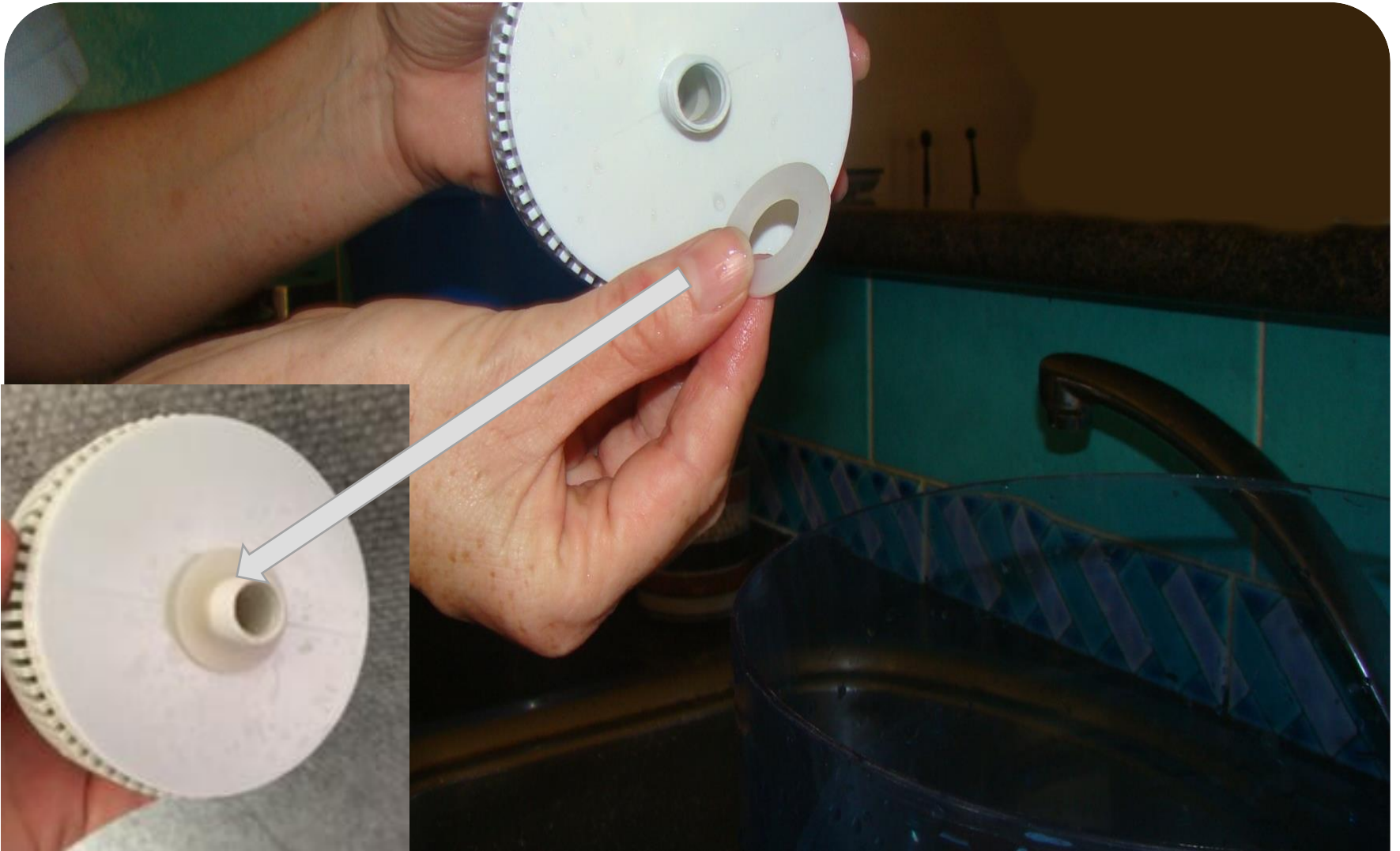
Pull out grid from dome and remove cloth filter



Replace with new cloth filter OR rinse clean existing cloth filter under water



Wipe down dome under running water, might need an old toothbrush to clean in between the gaps. Replace filter to dome & replace grid



Check that the washer is in place at the bottom of the dome



Use nut to screw back dome to top bowl - do not over tighten



Make sure O-ring at neck of filter is in place – it needs to be flat against the rim with no twists or turns.

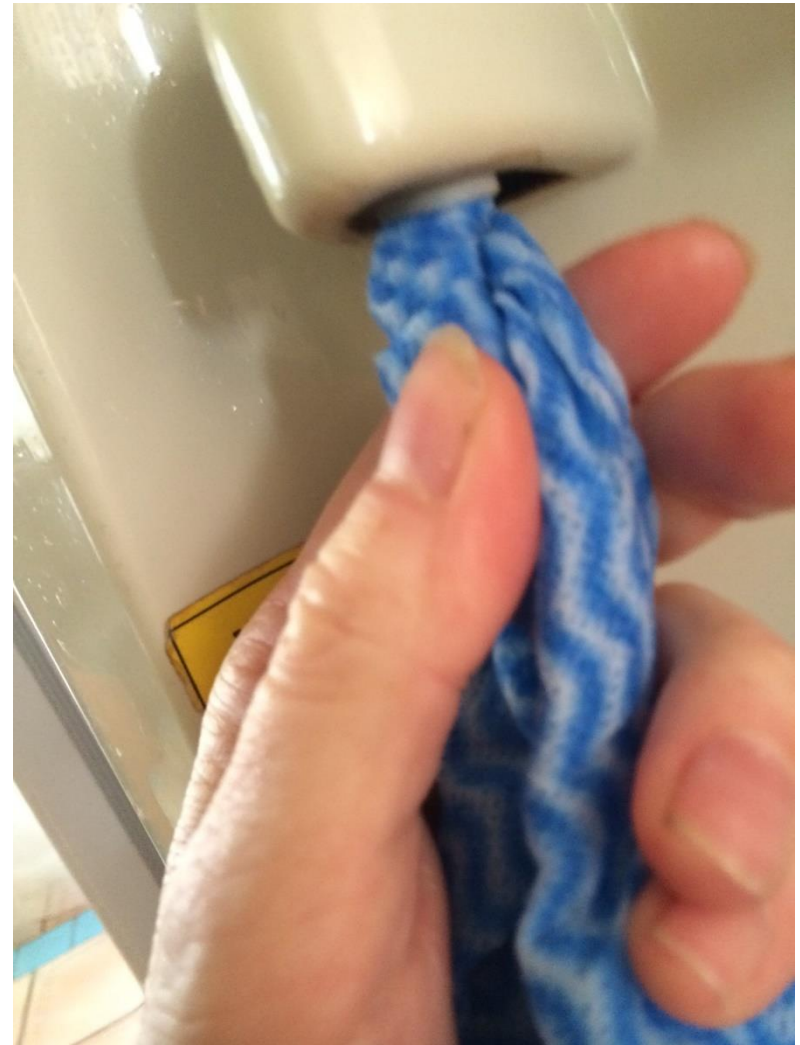


Be careful not to use too much force holding onto the top of the bowl as it might crack.

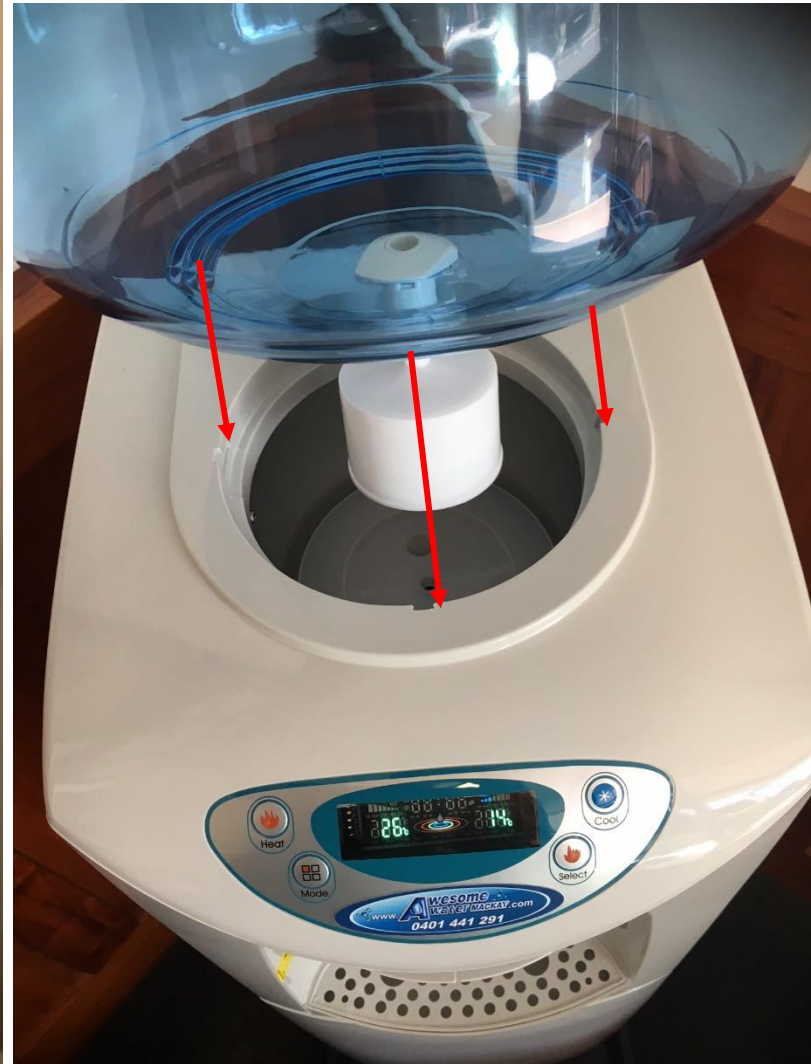
A safer option is to put the bowl upside down on a flat surface and then unscrew the filter.

Turn clockwise

Screw the filter back to the top bowl turning clock wise making sure the treads line up, and it is tightened securely but do not over tighten.



**Wrap your rag around a teaspoon / paddle pop,
and use to clean inside and around the tap spouts.**



Reassemble top & bottom bowls and return to base

Turn Bowl until it locks into place in the slots at the base of the machine



You are ready to fill with water again