



Tap repair on
Alpha Model



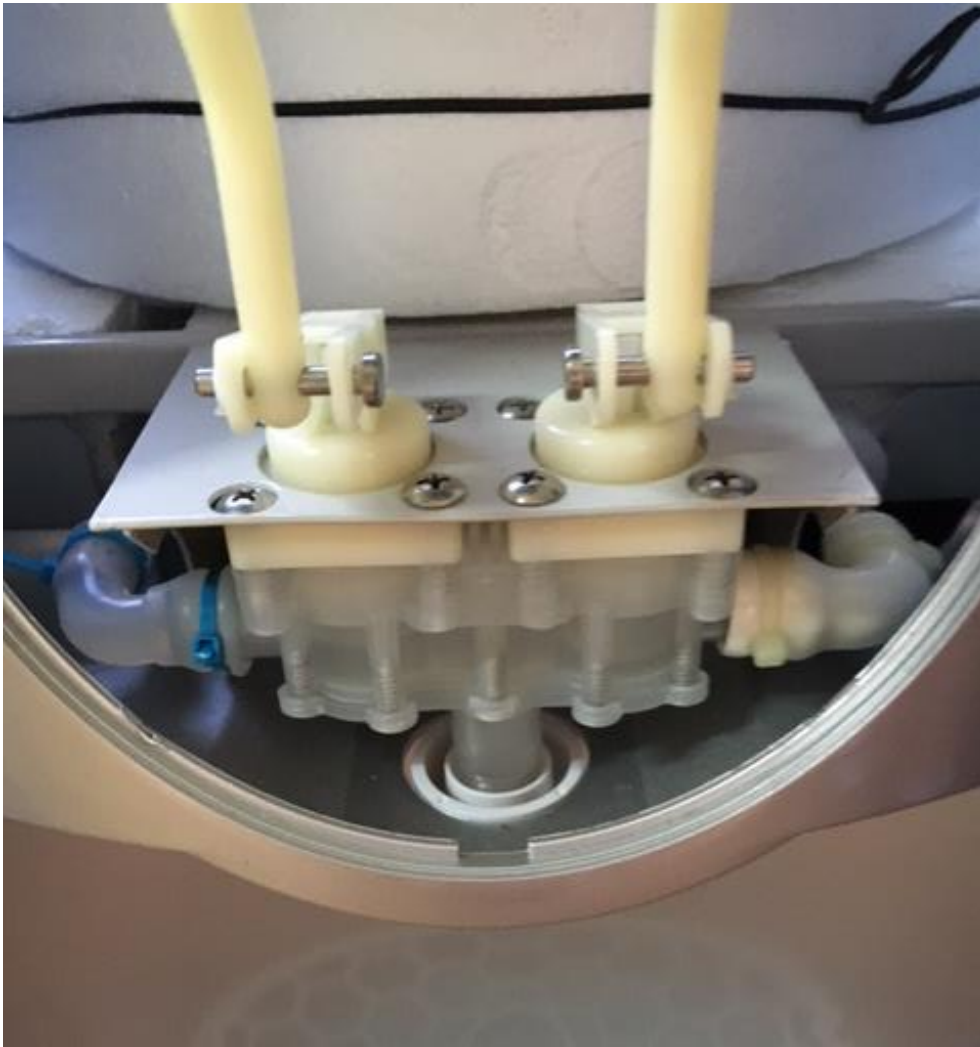
Open the front face by using a flat screw driver.

Wedge the screw driver in the bottom slot where the clip goes to prevent damage.





Remove the front face



Tap mechanism can now be inspected

Tap Components

The tap mechanism consist of 3 components

1. The Hook
2. The Arm – Blue & Green
3. The Base



Tap Components

1. Tap hook



2. Tap Arm

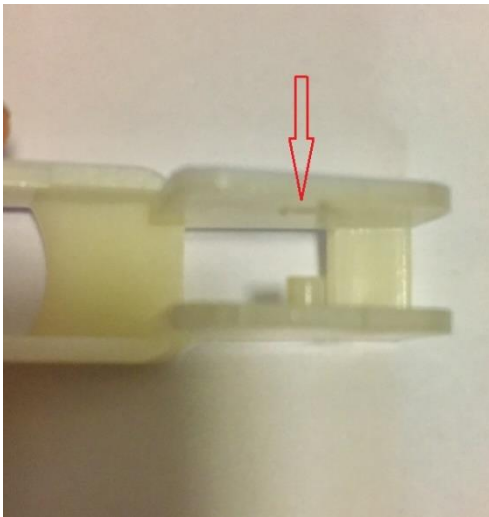


3. Tap Base



Repairs on tap components

1. Tap hook



The tab on the inside of the hook has broken off

2. Tap Arm



The tap arm has broken at the join

3. Tap Base



The base probe where the tap hook goes has worn out

1. Tap hook



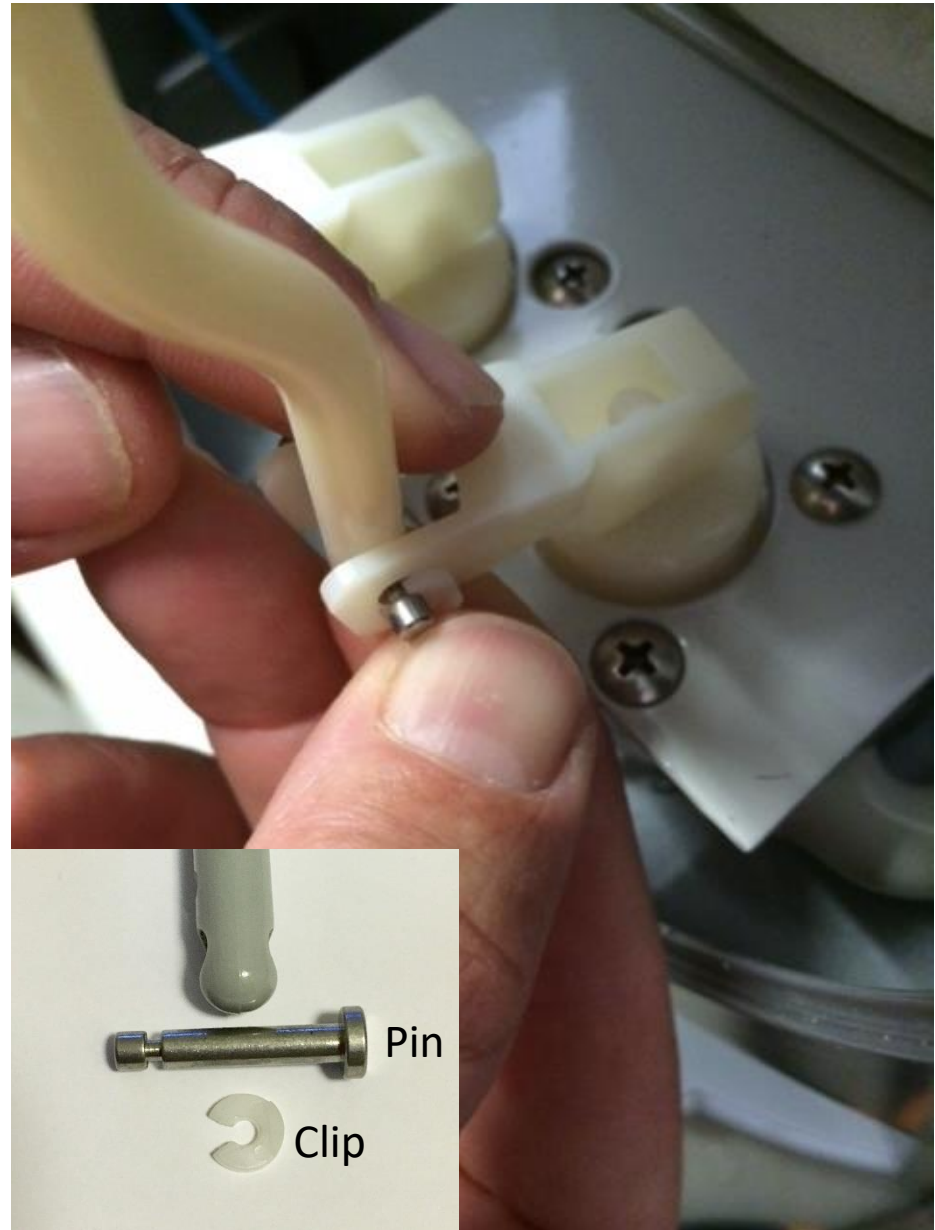
Take the plastic clip off that secures the pin connecting the tap hook to the tap arm.

Pull out pin

Remove broken tap hook

Replace with new tap hook

Fasten pin & clip again

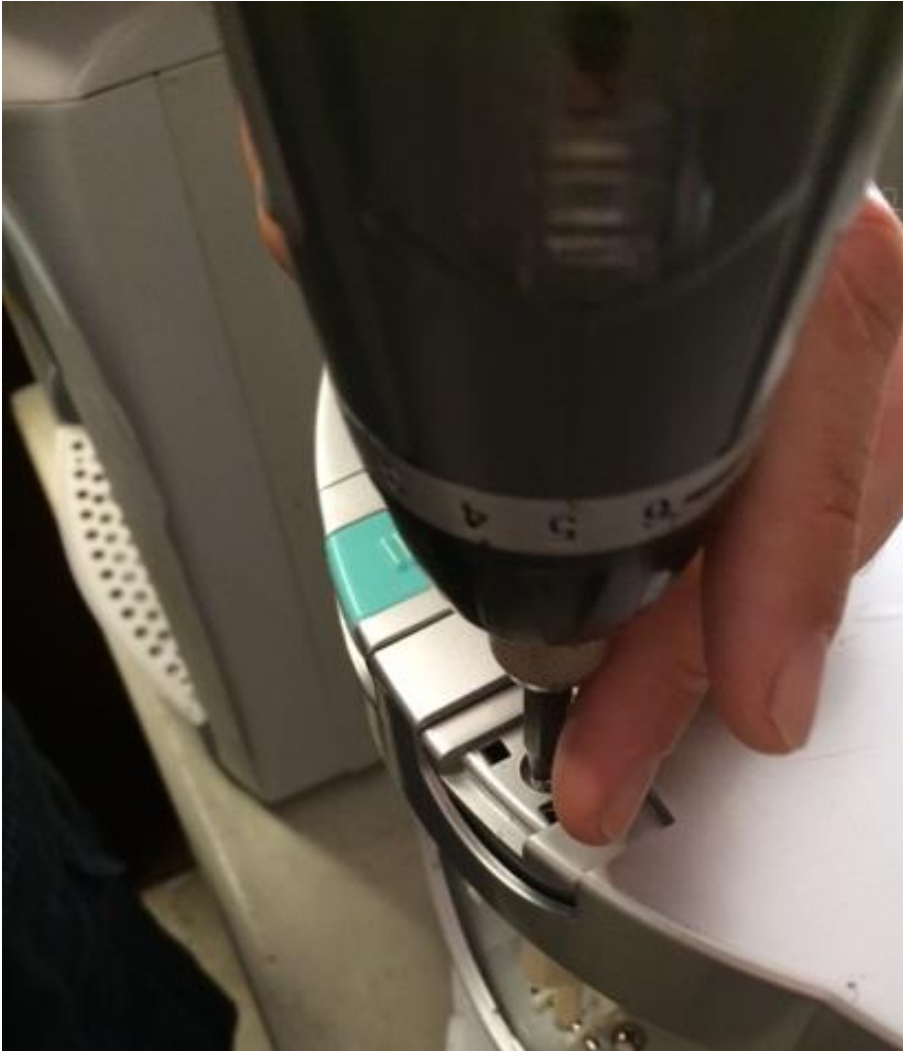


2. Tap arm broken at joint



2.1 Remove the blue / green tab using a Stanley knife

Tap arm broken at joint



2.2 Remove the screw as with a star screw driver / drill indicated

Tap arm broken at joint



2.3 Remove the button and the spring

Tap arm broken at joint



2.4 Remove the clip & the pin as per 2 (page 8)



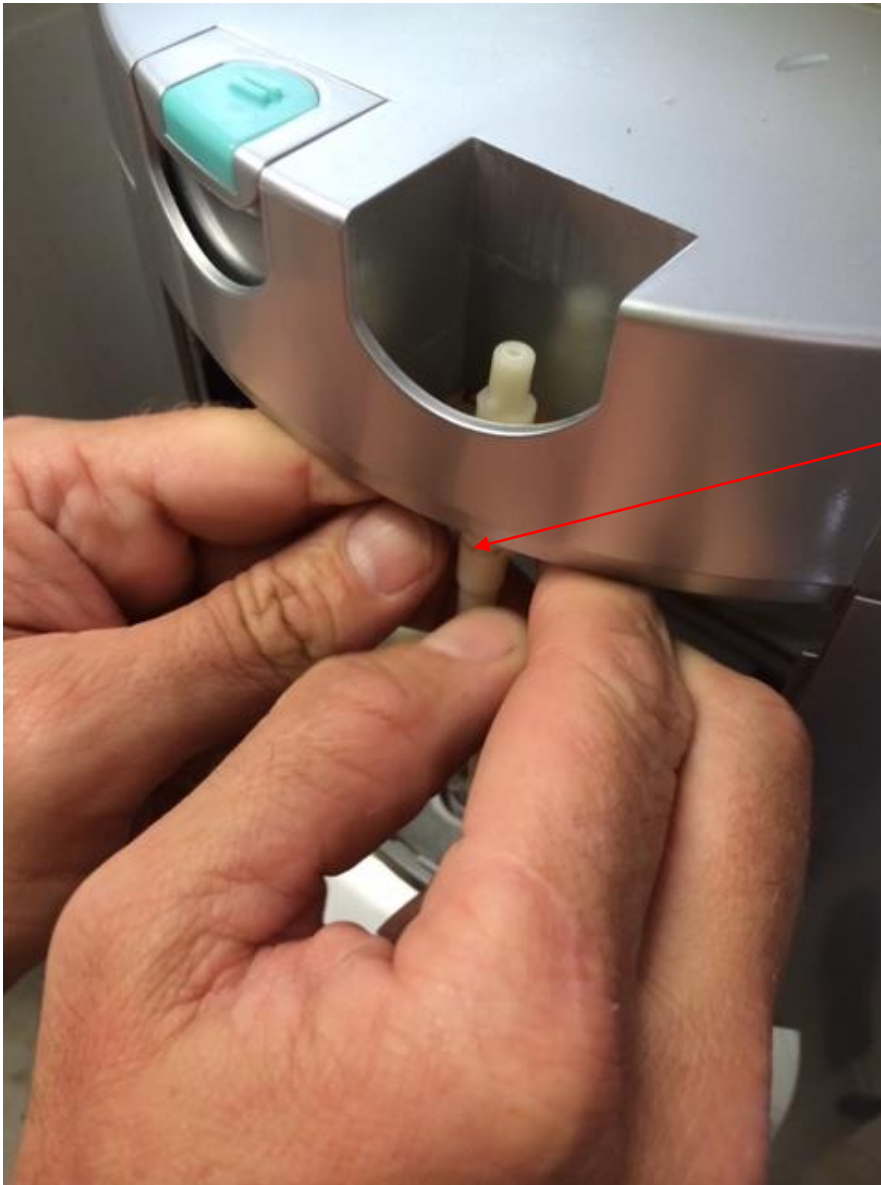
Tap arm broken at joint



2.5 Push the arm down and remove the clip at the joint



Tap arm broken at joint



2.6 Insert new tap arm, connect to tap hook, replace pin & clip to secure to tap hook



2.7 Replace clip at joint of tap arm



Tap arm broken at joint



2.8 Replace spring with narrow end facing up



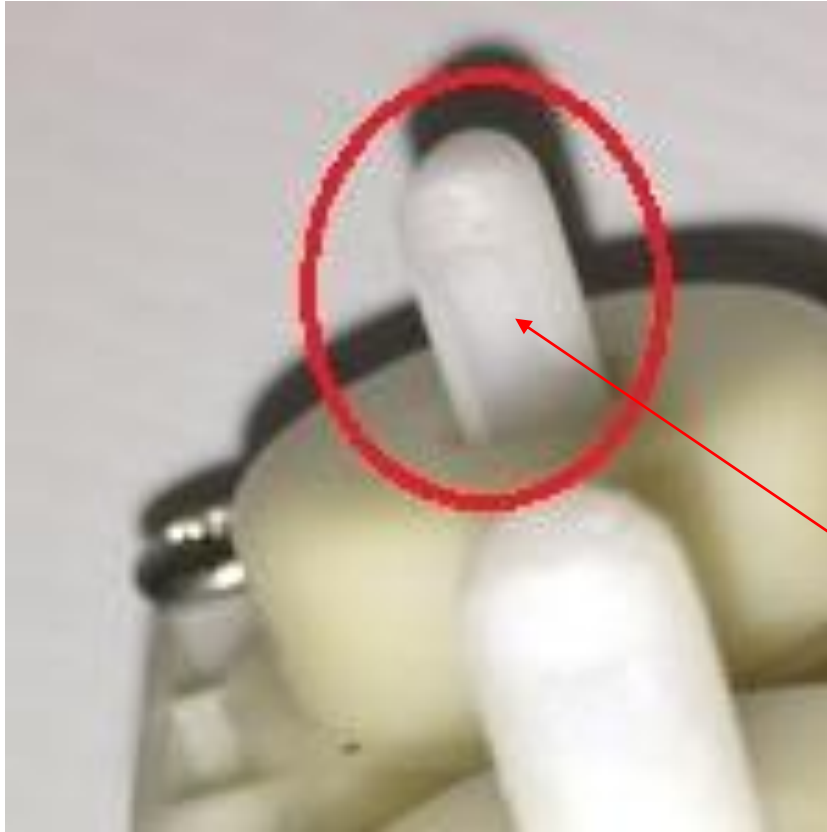
2.9 Replace screw and fasten – you need to push down really hard to allow screw to grip on arm

Tap arm broken at joint

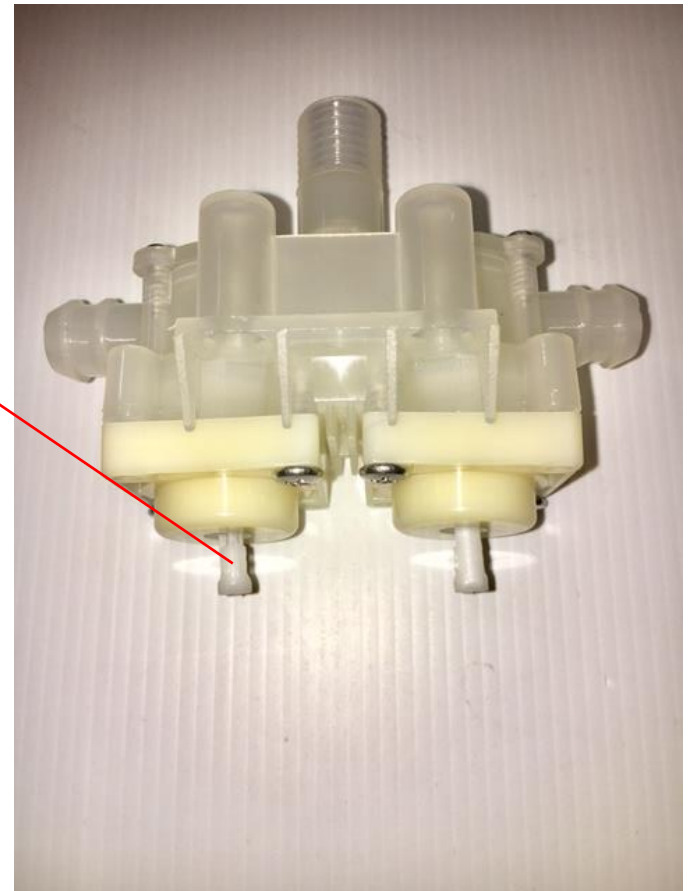


2.10 Replace blue tab – should just click in.

3. Tap Base worn out

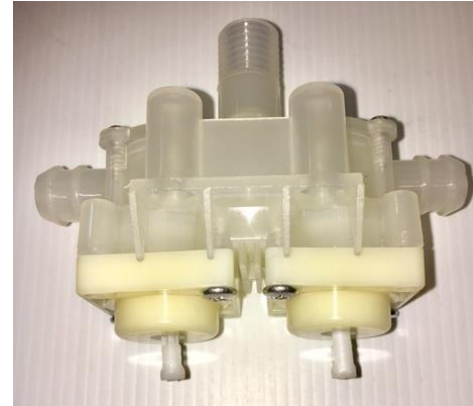


3. This job is really complicated – DIY not recommended





Dispensing valve
lever \$ 20 x 1



Dispensing base & nozzle \$ 30 x 1



Tap arms & push button \$ 32 x 1

Add \$10 if postage required